

CFS50-AEV12X08

CFS50

MOTOR FEEDBACK SYSTEMS ROTARY INCREMENTAL WITH COMMUTATION

SICK
Sensor Intelligence.

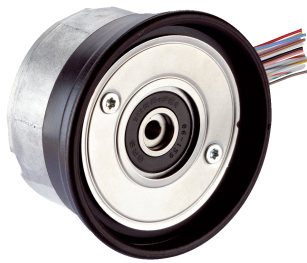


Illustration may differ

Ordering information

| Type | Part no. |
|----------------|----------|
| CFS50-AEV12X08 | 1065517 |

Other models and accessories → www.sick.com/CFS50

Detailed technical data

Performance

| | |
|---------------------------------------|--|
| Number of lines per revolution | 4,096 ¹⁾ |
| Measuring step | 90° /number of lines |
| Commutation signals | 8 pole pairs (See diagram, different commutation on request) |
| Reference signal, number | 1 |
| Reference signal, position | 90° electric, logically gated with A and B |
| Operating speed | ≤ 6,000 min ⁻¹ |

¹⁾ Number of lines from 1 ... 1,000 and > 4,096 ... 65,536 on request.

Interfaces

| | |
|--------------------------------|-------------|
| Communication interface | Incremental |
|--------------------------------|-------------|

Electrical data

| | |
|---------------------------------|-------------------------------|
| Connection type | Stranded wire, 15-pin, radial |
| Supply voltage | 4.5 V DC ... 5.5 V DC |
| Power consumption | 60 mA ¹⁾ |
| Maximum output frequency | ≤ 820 kHz |

¹⁾ Without load.

Mechanical data

| | |
|---|-----------------------------------|
| Shaft version | Tapered shaft |
| Flange type / stator coupling | Rubber support |
| Dimensions | See dimensional drawing |
| Weight | 0.1 kg |
| Moment of inertia of the rotor | 10 gcm ² |
| Operating speed | 12,000 min ⁻¹ |
| Angular acceleration | ≤ 200,000 rad/s ² |
| Operating torque | 0.2 Ncm |
| Start up torque | 0.4 Ncm |
| Permissible movement of the drive element, static | Radial ± 0.75 mm axial |
| Permissible movement of the drive element, dynamic | ± 0.1 mm radial ± 0.2 mm axial |

| | |
|---|-----------------------------------|
| Angular motion perpendicular to the rotational axis, static | ± 0.005 mm/mm |
| Angular motion perpendicular to the rotational axis, dynamic | ± 0.0025 mm/mm |
| Life of ball bearings | 3.6 x 10 ⁹ revolutions |

Ambient data

| | |
|--|--|
| Operating temperature range | -20 °C ... +115 °C |
| Storage temperature range | -40 °C ... +125 °C, without package |
| Relative humidity/condensation | 90 %, Condensation not permitted |
| Resistance to shocks | 100 g, 10 ms (according to EN 60068-2-27) |
| Frequency range of resistance to vibrations | 20 g, 10 Hz ... 2,000 Hz (according to EN 60068-2-6) |
| EMC | According to EN 61000-6-2 and EN 61000-6-3 ¹⁾ |
| Enclosure rating | IP40 (according to IEC 60529) |

¹⁾ The EMC according to the standards quoted is achieved when the motor feedback system is mounted in an electrically conductive housing, which is connected to the central earthing point of the motor controller via a cable screen. The GND-(0 V) connection of the supply voltage is also grounded here. If other shielding concepts are used, users must perform their own tests.

Classifications

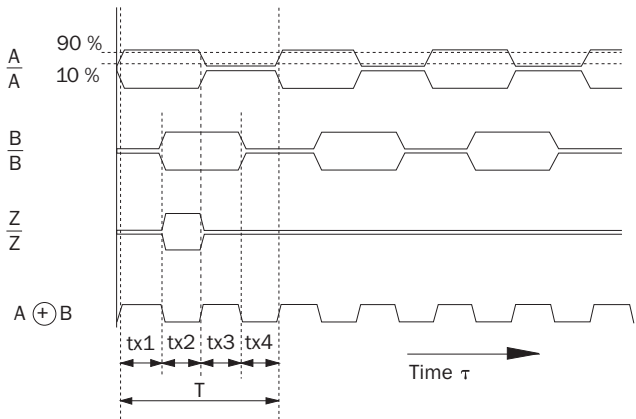
| | |
|-----------------------|----------|
| ECI@ss 5.0 | 27270501 |
| ECI@ss 5.1.4 | 27270501 |
| ECI@ss 6.0 | 27270590 |
| ECI@ss 6.2 | 27270590 |
| ECI@ss 7.0 | 27270501 |
| ECI@ss 8.0 | 27270501 |
| ECI@ss 8.1 | 27270501 |
| ECI@ss 9.0 | 27270501 |
| ECI@ss 10.0 | 27273805 |
| ECI@ss 11.0 | 27273901 |
| ETIM 5.0 | EC001486 |
| ETIM 6.0 | EC001486 |
| ETIM 7.0 | EC001486 |
| UNSPSC 16.0901 | 41112113 |

PIN assignment

| PIN | Color | Signal |
|-----|--------------|--|
| 1 | Blue | Ground connection (GND) |
| 2 | Red | Supply voltage $5\text{ V} \pm 10\% (U_s)$ |
| 3 | Yellow | Reference signal inverted (\bar{Z}) |
| 4 | Purple | Reference signal (Z) |
| 5 | Brown | Increment signal inverted (\bar{A}) |
| 6 | White | Increment signal (A) |
| 7 | Black | Increment signal inverted (\bar{B}) |
| 8 | Pink | Increment signal (B) |
| 9 | White/Red | Commutation signal inverted (\bar{T}) |
| 10 | White/Gray | Commutation signal (T) |
| 11 | White/Blue | Commutation signal inverted (\bar{S}) |
| 12 | White/Yellow | Commutation signal (S) |
| 13 | White/Pink | Commutation signal inverted (\bar{R}) |
| 14 | White/Green | Commutation signal (R) |
| 15 | Gray | Electronic setting of the commutation signals (SET0) |

Diagrams

At constant speed, looking at the input shaft, and clockwise rotation



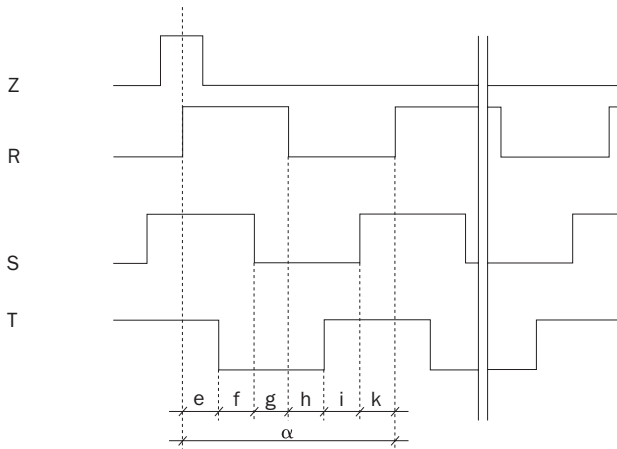
At constant rotational speed with regard to the input shaft and rotation in clockwise direction.

By connecting the two signals A and B, an output signal arises whose period durations tx1 ... tx4 have varying lengths.

The differences are determined:

- by the pulse/pause ratio tolerance of the individual channels
- by the tolerance in the 90° phase shift between A and B
- by the frequency

The times tx1 ... tx4 ideally have to amount to 1/4 of the particular period duration T. The typical output frequency of the encoder is defined so that the max. time tx is smaller than 1.5 x T/4.





| Polpairs | Number of poles | e, f, g, h, i, k | α |
|----------|-----------------|------------------|----------|
| 2 | 4 | 30° | 180° |
| 3 | 6 | 20° | 120° |
| 4 | 8 | 15° | 90° |
| 6 | 12 | 10° | 60° |
| 8 | 16 | 7.5° | 45° |

The angle information is related to a mechanical shaft rotation. Flank precision of the signals R, S, T $\pm 1^\circ$.

Recommended accessories

Other models and accessories → www.sick.com/CFS50

| | Brief description | Type | Part no. |
|---|---|------------------|----------|
| Plug connectors and cables | | | |
|  | Head A: female connector, JST, 8-pin, straight Head B: male connector, M23, 17-pin, straight Cable: Incremental, unshielded, 1 m | DSL-2317-G01MJB7 | 2071332 |
|  | Head A: female connector, terminal box, 8-pin, straight Head B: male connector, M23, 17-pin, straight Cable: Incremental, unshielded, 1 m | DSL-2317-G01MJC7 | 2071331 |

SICK AT A GLANCE

SICK is one of the leading manufacturers of intelligent sensors and sensor solutions for industrial applications. A unique range of products and services creates the perfect basis for controlling processes securely and efficiently, protecting individuals from accidents and preventing damage to the environment.

We have extensive experience in a wide range of industries and understand their processes and requirements. With intelligent sensors, we can deliver exactly what our customers need. In application centers in Europe, Asia and North America, system solutions are tested and optimized in accordance with customer specifications. All this makes us a reliable supplier and development partner.

Comprehensive services complete our offering: SICK LifeTime Services provide support throughout the machine life cycle and ensure safety and productivity.

For us, that is “Sensor Intelligence.”

WORLDWIDE PRESENCE:

Contacts and other locations –www.sick.com